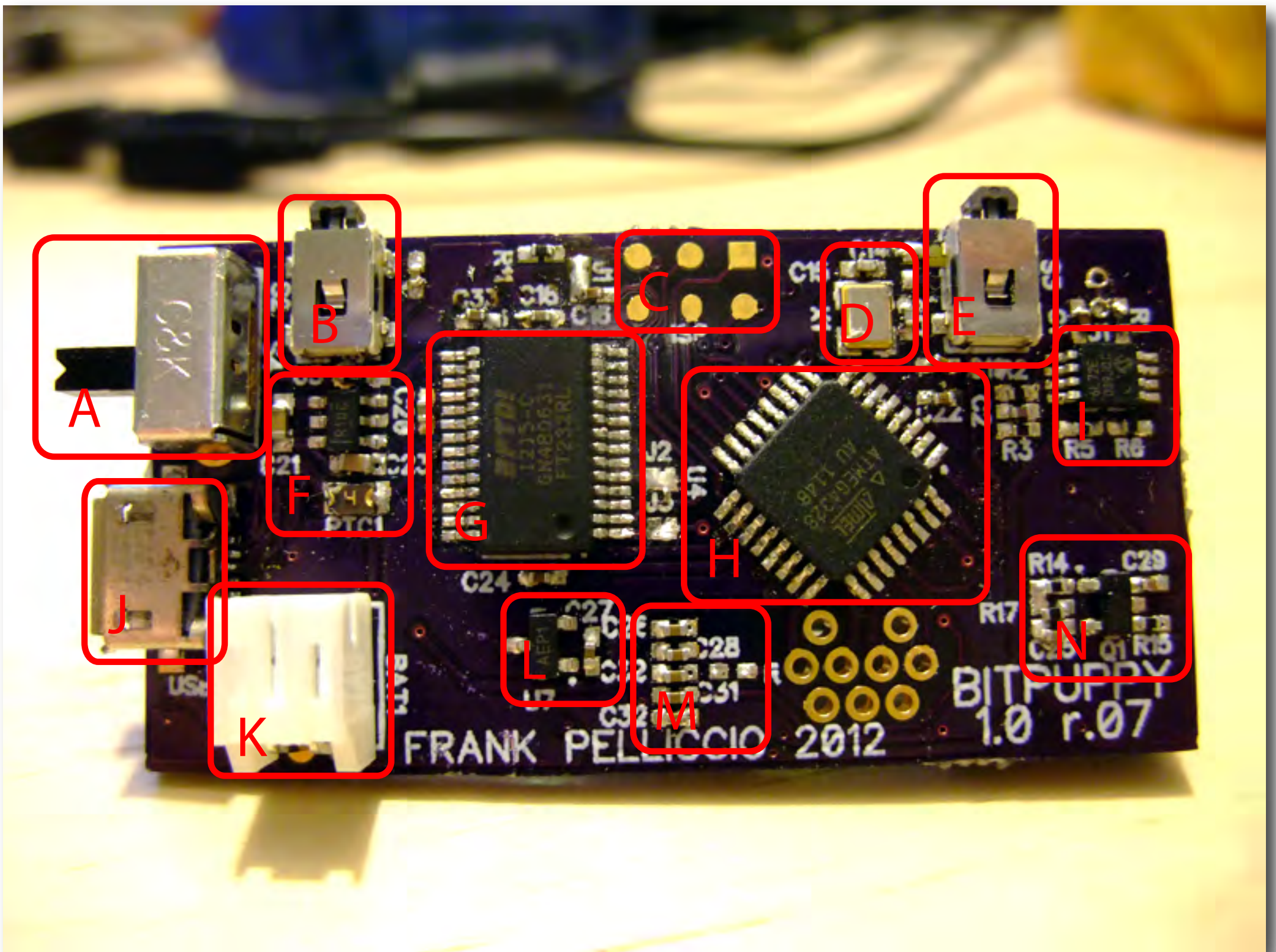


- A - Analog microphone [not populated]
- B - 128 x 32 Graphical OLED display. Font and cursor rendering in firmware.
- C - Piezo transducer for audio output
- D - Breakout I/O; BAT+; 3.3v; GND
- E - 4-way joystick + center select
- F - Lipo battery charging circuit w/bi-color LED charge indicator



A - Battery Power Switch

B - User switch B

C - AVR ISP bed-of-nails programming pads

D - 20 MHz crystal

E - User switch A

F - 3.3V boost regulator

G - FTDI USB-Serial interface

H - Atmel ATmega328 8-bit AVR microcontroller  
w/32K program flash, 2K RAM, 2K EEPROM

I - Microphone preamp

J - Micro USB-B. Powers LiPo charger, exposes virtual COM port.

For user UART or Arduino [AVRDude]-compatible serial bootloader

K - JST connector for LiPo battery

L - Analog temperature sensor

M - Joystick debouncing capacitors

N - Piezo driver